

Installation instruction - Table screen

1. Place the screen on a table or other flat surface.
2. Screw the Table mounts on the marked threaded sleeves on with the included screws.

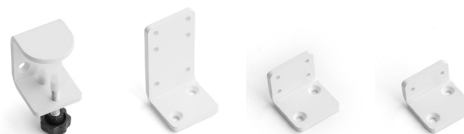


Brackets

3. Lift the screen against the table top edge, the brackets should rest against the bottom side of the table top. Mount with a suitable screw from below in the ready made holes on the bracket. Screws for this is not included.

Bevelled table top edge

When mounting on tables with bevelled edge, Bracket 95mm should be used. When a side screen is used, bracket 45mm on the inner mounting spot of the side screen is necessary. See picture below.



Clamp mount	Bracket 95mm	Bracket 45mm	Bracket 28mm
91-006 - 91-008	91-010 - 91-012	91-001 - 91-003	91-014 - 91-016

Clamp mount

4. Hook the screen to the table and tighten the screw with the plastic cap. Adjust the angle of the screen with the other screw.

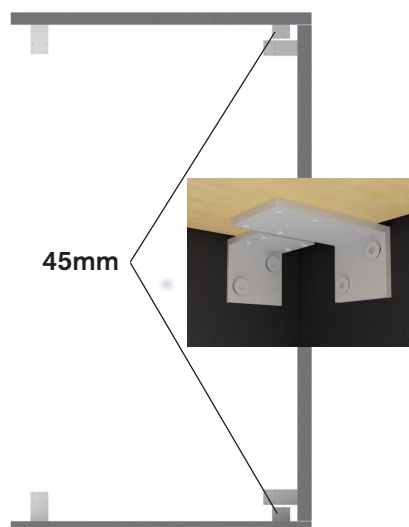
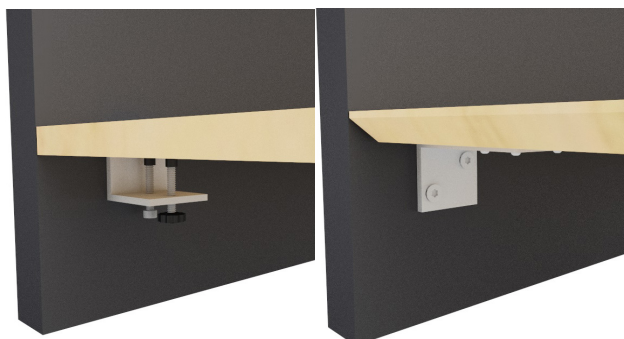
Front and side screens are easily connected with the built-in magnets.

Note: The side screen is 40mm longer to overlap the front screen

Qty mounts

Up to 1800 - 2 mounts per screen
 1800 and bigger - 3 mounts per screen

With toolbar - always 3 mounts per screen



Any questions? don't hesitate to call.